

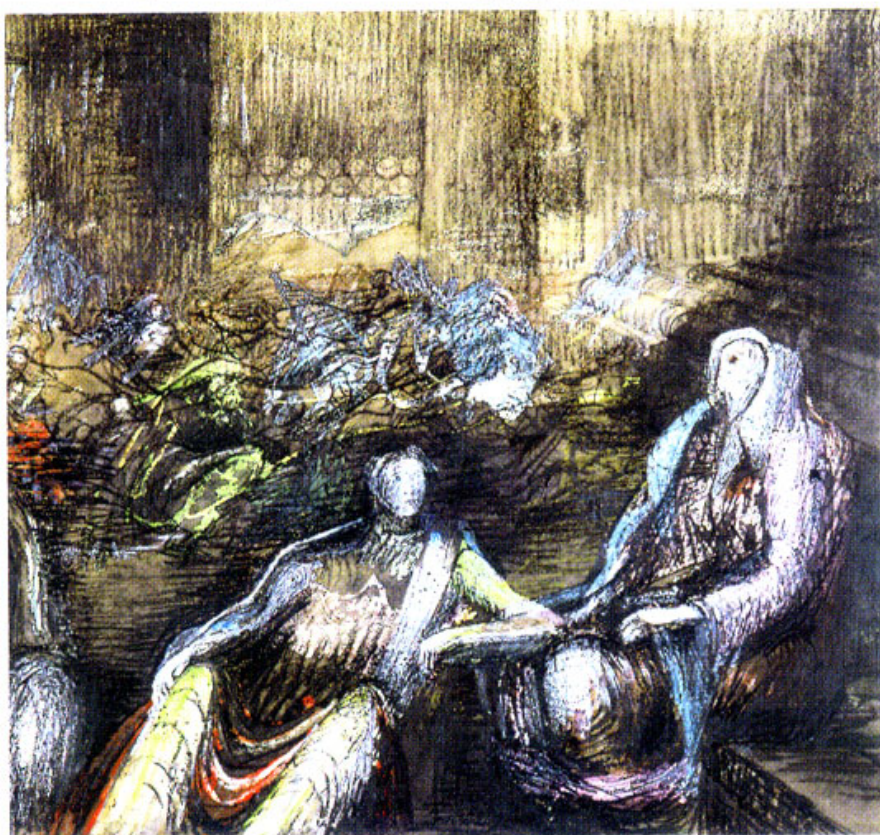
OSBORNE SAMUEL

MODERN AND CONTEMPORARY ART

HENRY MOORE (1898-1986)

Henry Moore

Volume 3 Complete Drawings 1940-49



Henry Moore: Complete Drawings 1916-83: Volume 3 (Drawings 1940-49) 2001
29 x 24 cms
(11.40 x 9.43 in)
P.O.A.

OSBORNE SAMUEL

MODERN AND CONTEMPORARY ART

Edited by Ann Garrould
Hardback

As part of the series covering the complete drawings of Henry Moore, Volume 3 deals with the years of the Second World War, the only period of Moore's working life when he was not actively involved in making sculpture.

This decade includes the birth of Moore's daughter in 1946, his one-man exhibition at the Museum of Modern Art, New York, and his long association with Curt valentine and the Buchholz Gallery, New York.

Moore was appointed an Official War Artist in 1940 and his drawings of figures in the London Underground shelters during the Blitz brought his work before the general public for the first time. At the end of 1941, he visited Wheldale Colliery in Yorkshire to record miners working at the coalface.

After these commissions, other drawings such as mother and child studies were made for sculpture projects. In addition to sculptural themes, Moore experimented with textile designs, and in response to literary commissions he illustrates Edward Sackville-West's 'The Rescue', 1946 and Andre Gide's 'Promethee', 1949.

This was a rich period for Moore's drawing, with new

OSBORNE SAMUEL

MODERN AND CONTEMPORARY ART

ideas being introduced that were later to bring him world-wide recognition.

Please note that all 7 volumes are available to buy priced