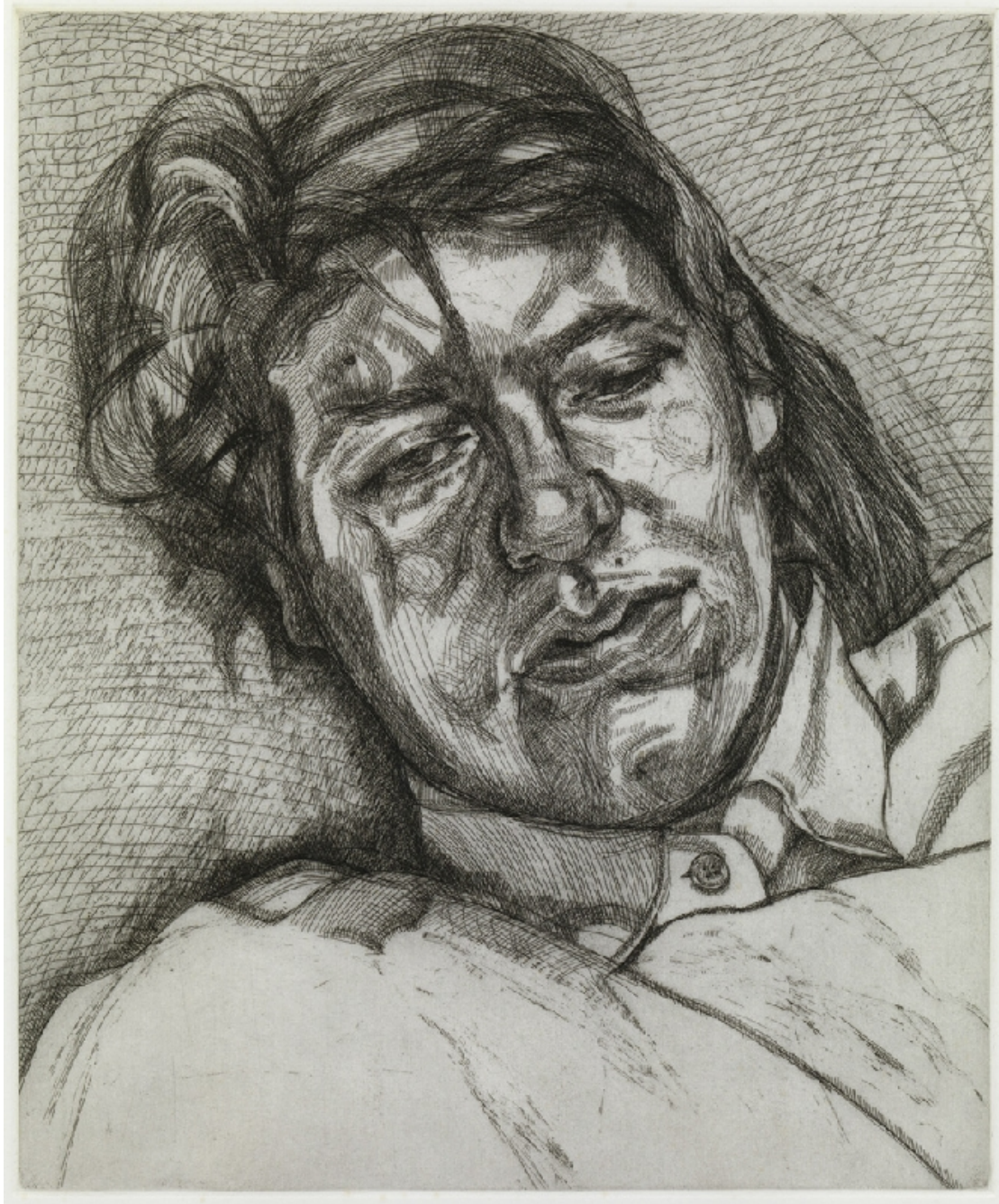


OSBORNE SAMUEL

MODERN AND CONTEMPORARY ART

LUCIAN FREUD



Bella, 1987
Etching
69 x 57 cms
(27.12 x 22.40 in)

OSBORNE SAMUEL

MODERN AND CONTEMPORARY ART

P.O.A.

Initialed in pencil and numbered from the AP edition of XV aside from the edition of 50, on BFK Rives paper, published by James Kirkman, London, and Brooke Alexander, New York

Reference: Hartley 30

The sitter is the artist's daughter Bella Freud