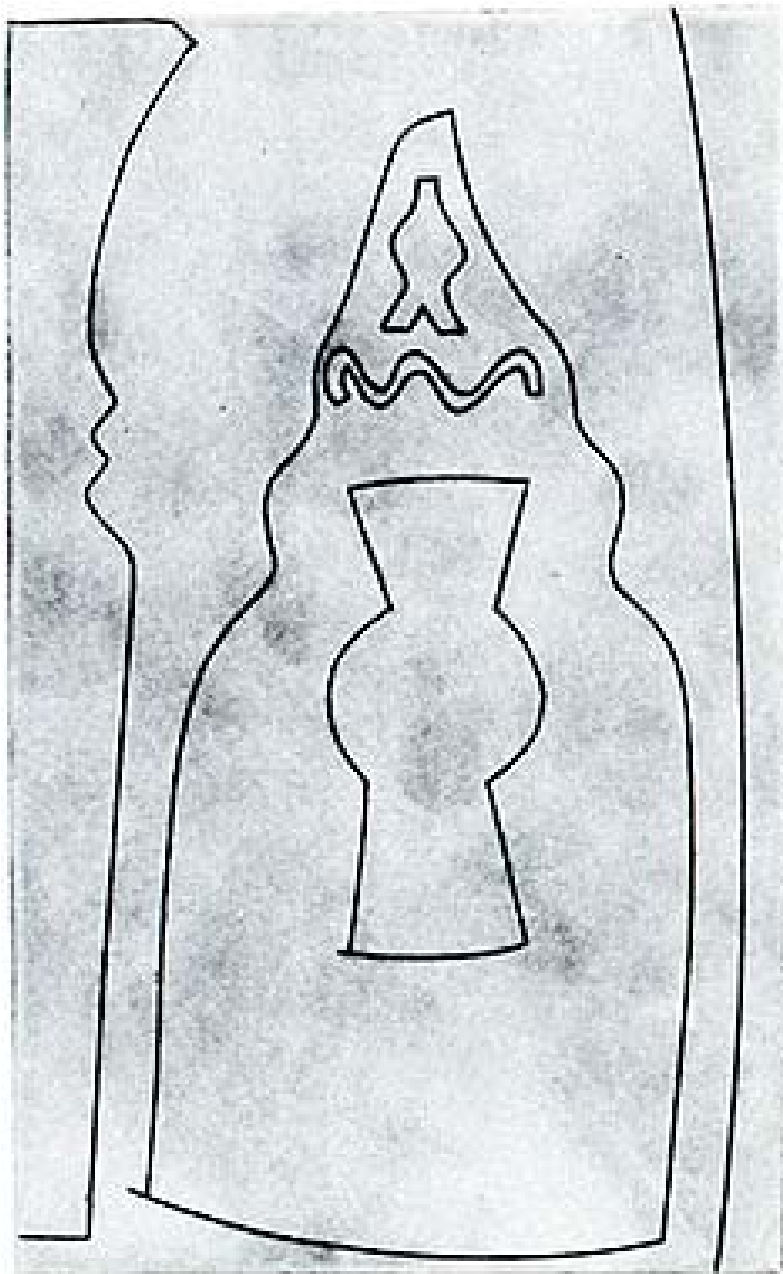


OSBORNE SAMUEL

MODERN AND CONTEMPORARY ART

BEN NICHOLSON (1894-1982)



Curled Turkish Form, 1966

Etching

38 x 27.5 cms

(14.93 x 10.81 in)

OSBORNE SAMUEL

MODERN AND CONTEMPORARY ART

Available

Printed with tone on wove paper; from the suite 'Greek and Turkish Forms' (there were eleven prints in the set); signed, dated (1966) and numbered from the edition of 50 in pencil; printed by Lafranca, Locarno, with their blindstamp; published by Ganymed Original Editions and Marlborough Fine Art.

Ref: Lafranca 66 Waddington 25