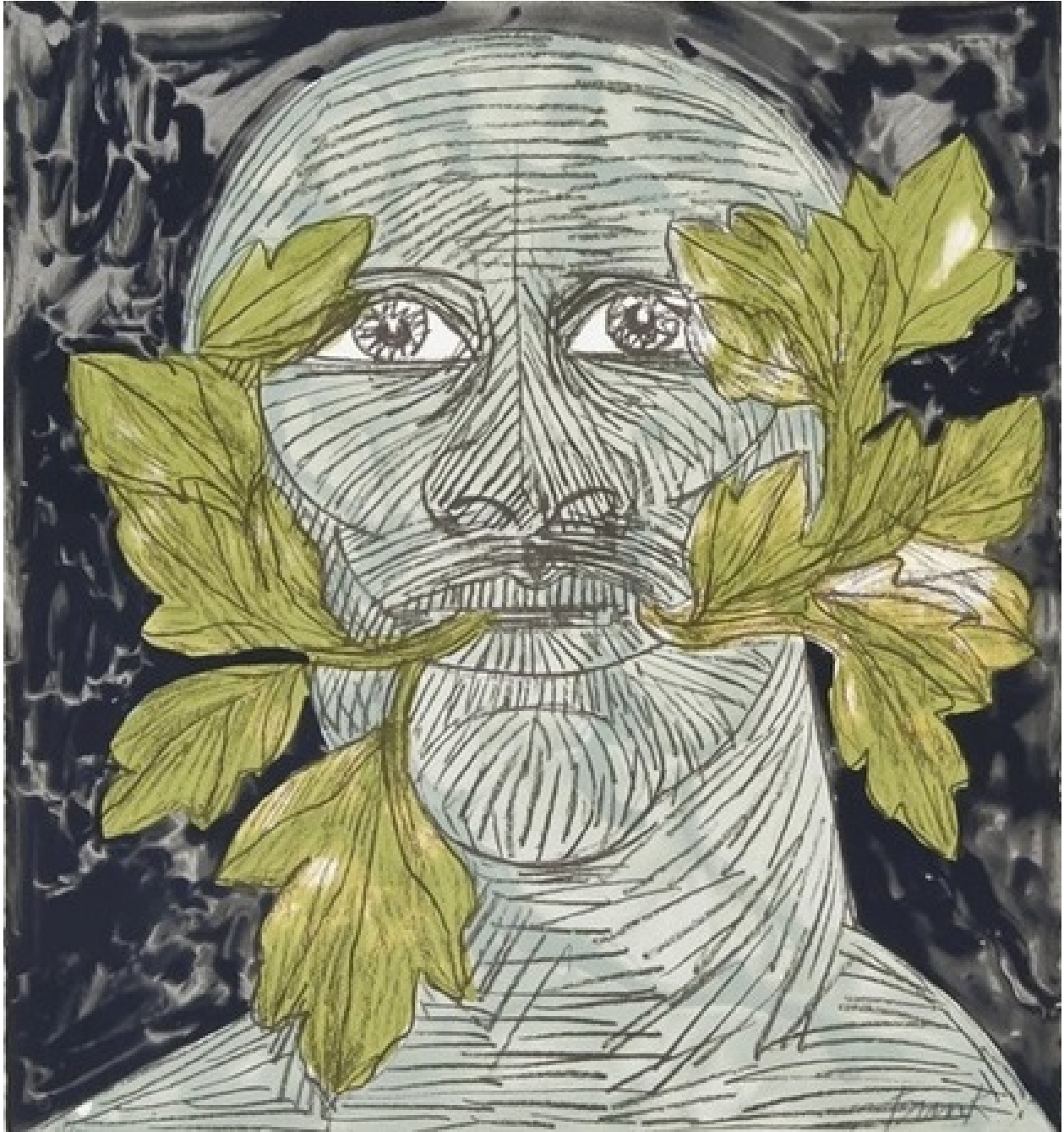


OSBORNE SAMUEL

MODERN AND CONTEMPORARY ART

ELISABETH FRINK (1930-1993)



Green Man, 1992

56.5 x 52 cms

(22.20 x 20.44 in)

Available

OSBORNE SAMUEL

MODERN AND CONTEMPORARY ART

Reference: Wiseman 160

Printed in colors, to the sheet edges on Somerset textured paper, the full sheet, signed and numbered 23/70 in pencil, printed at Curwen Chilfont Prints with their blindstamp and with Kip Gresham's blindstamp, published by Curwen Chilford Prints and the artist