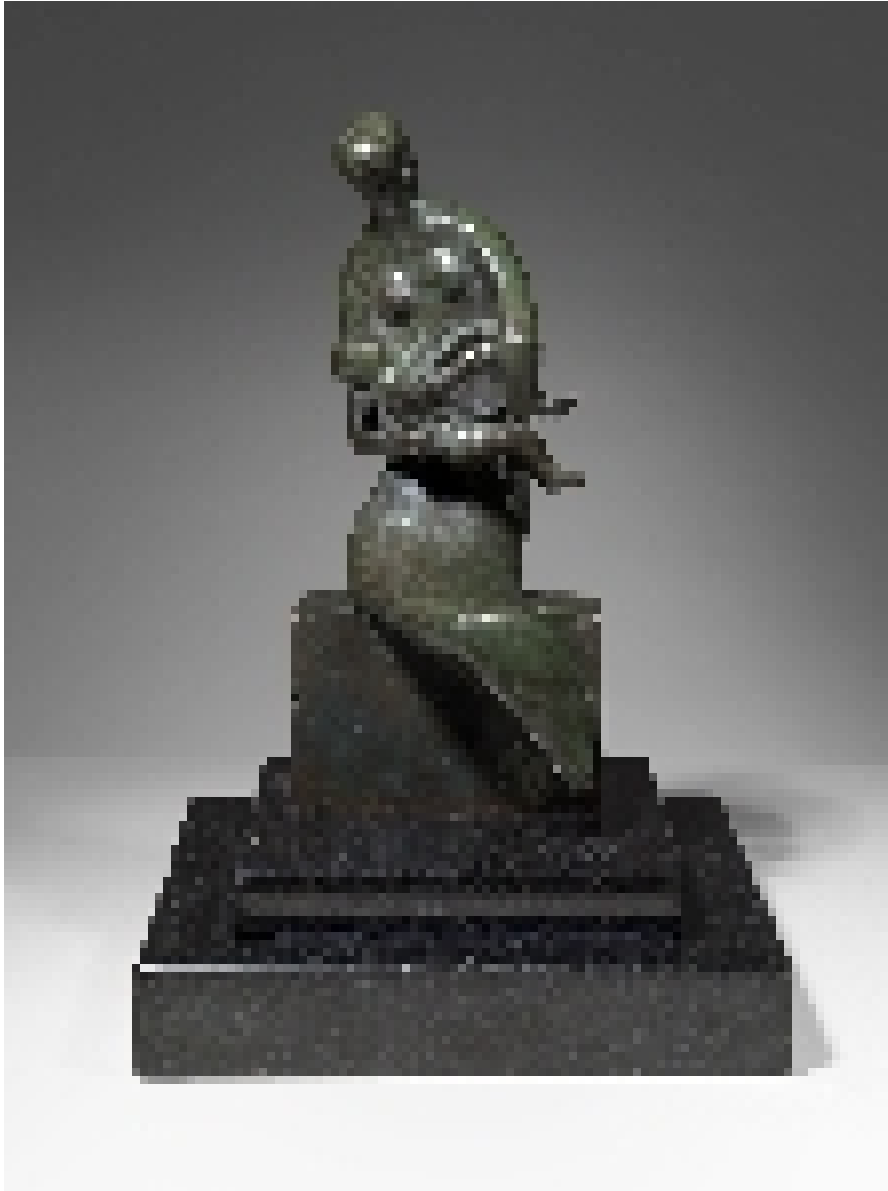


OSBORNE SAMUEL

MODERN AND CONTEMPORARY ART

HENRY MOORE (1898-1986)



Maquette for Curved Mother and Child, 1980

Bronze
18.5 x 9 x 8.4 cms
(7.27 x 3.54 in)

Edition of 9
Signed and numbered on base
Dimensions exclude the height of the marble base

OSBORNE SAMUEL

MODERN AND CONTEMPORARY ART

Provenance

Goodman Gallery, Johannesburg,

Private Collection, Australia, 1980's

Private Collection, UK

Alan Bowness (ed.), Henry Moore, Sculptures and Drawings, Sculpture 1980-86, Volume 6,

Lund Humphries, London, 1999, cat.no.791

John Hedgecoe, 'The Sculpture of Henry Moore,' published by Collins & Brown, 1998, no. 669,
p. 242