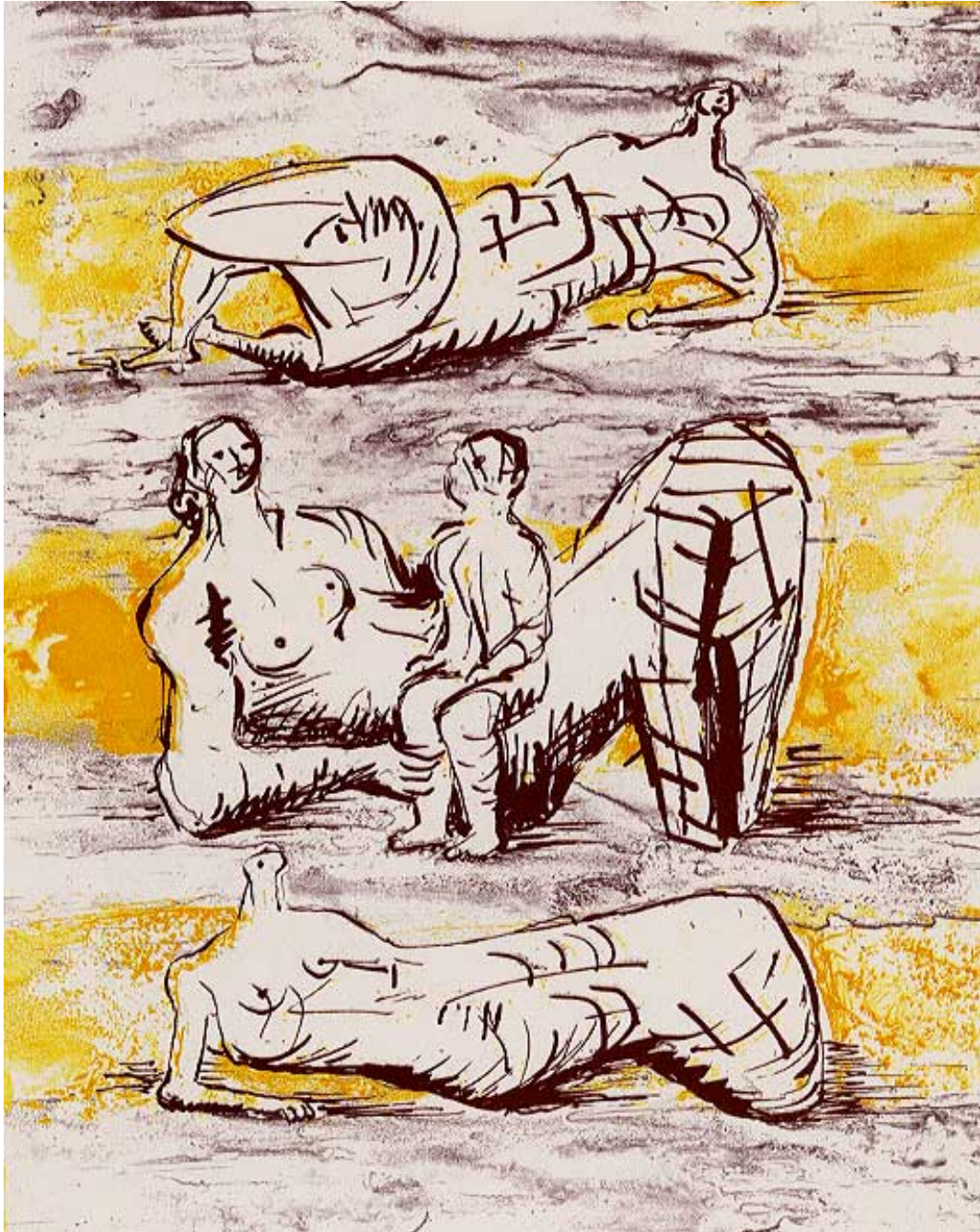


OSBORNE SAMUEL

MODERN AND CONTEMPORARY ART

HENRY MOORE (1898-1986)



Reclining Figures and Reclining Mother and Child, 1973

Lithograph
29.8 x 23.8 cms
(11.71 x 9.35 in)

OSBORNE SAMUEL

MODERN AND CONTEMPORARY ART

Aside from the edition of 85. A Printer's proof from the archive of Stanley Jones, printer at Curwen Prints Ltd where the edition was executed.

Annotated P/P 1 lower left and signed by the artist lower right

Reference: CGM 347

Annotated P/P 1 lower left and signed by the artist lower right

Reference: CGM 347

Paper size: 64 x 47cm