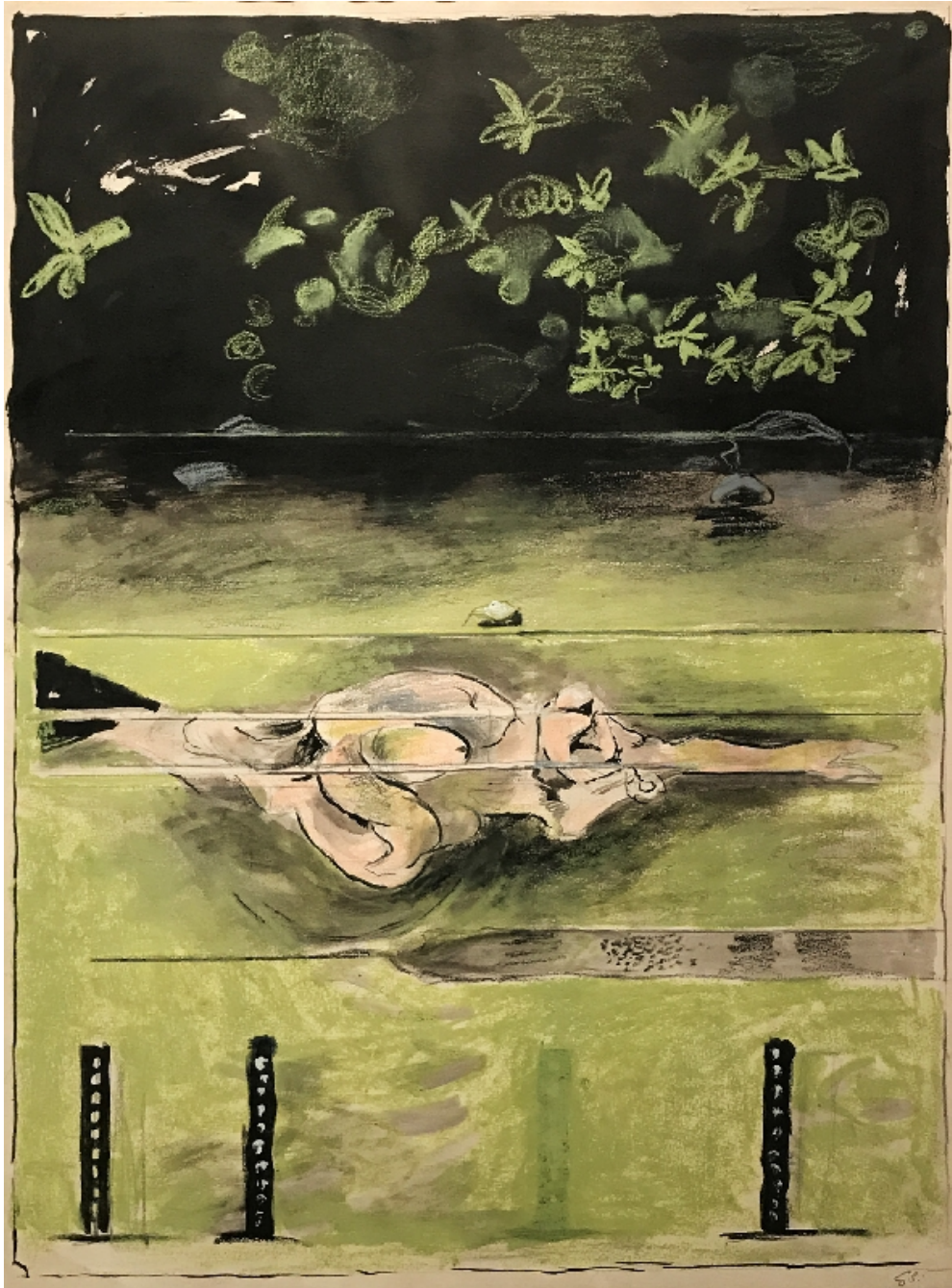


# OSBORNE SAMUEL

MODERN AND CONTEMPORARY ART

---

GRAHAM SUTHERLAND (1903-1980)



**The Swimmer, 1973**

Gouache on paper

65.5 x 52 cms

(25.74 x 20.44 in)

# OSBORNE SAMUEL

MODERN AND CONTEMPORARY ART

---

P.O.A.

1973/74

Provenance:

Private Collection, UK

Christopher Hull Gallery, London

The Swimmer is the maquette for a lithograph of the same name, Tassi 147, printed by Mourlot, Paris in 1973. Sutherland made several studies of the same subject, amongst which a large canvas in the National Museum of Wales