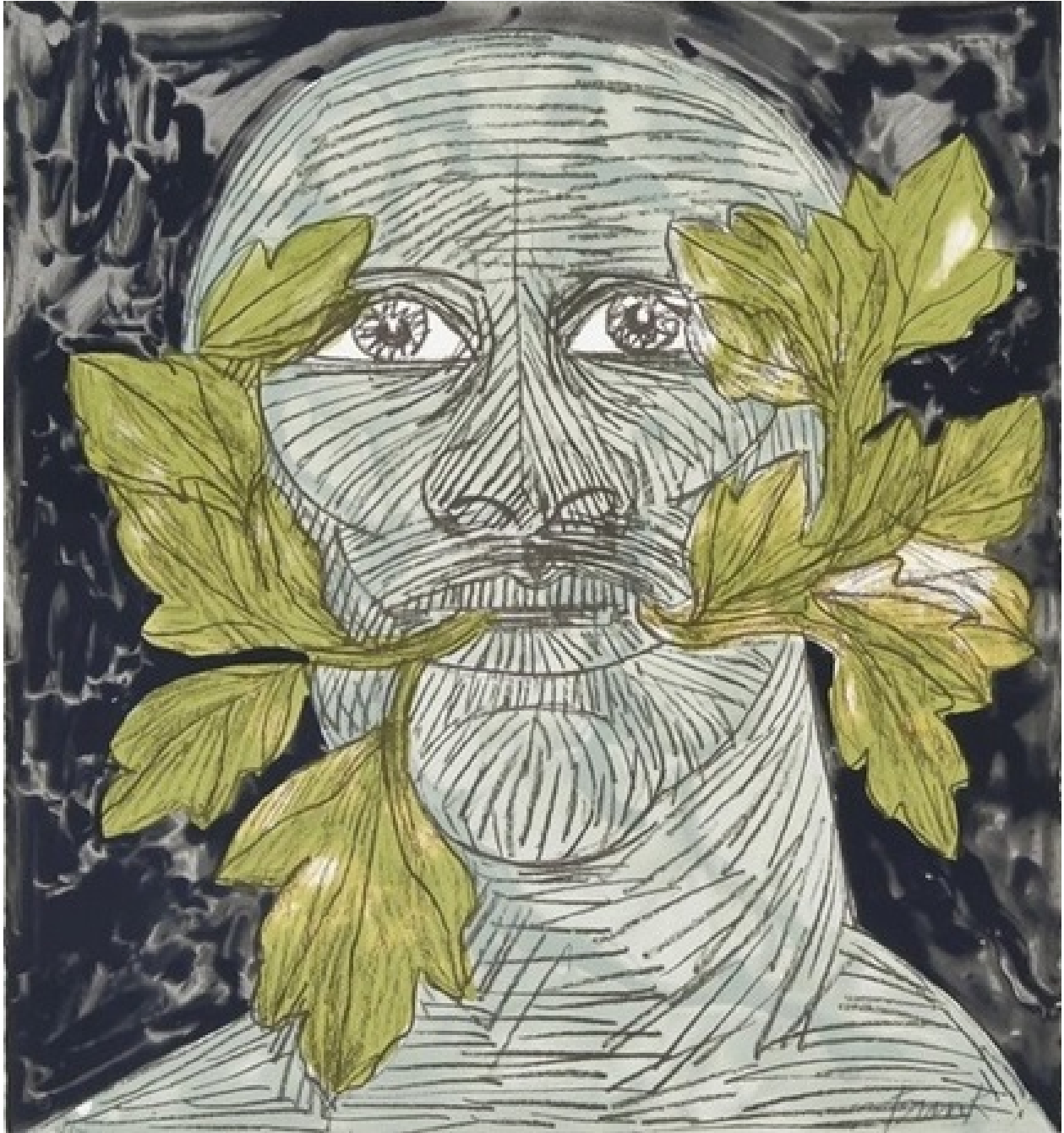


OSBORNE SAMUEL

MODERN AND CONTEMPORARY ART

ELISABETH FRINK (1930-1993)



Green Man, 1992

Screenprint

56.5 x 52 cms

(22.20 x 20.83 in)

Page 1 of 2

23 Dering Street London W1S 1AW
Tel: 020 7493 7939 Email: info@osbornesamuel.com
www.osbornesamuel.com

OSBORNE SAMUEL

MODERN AND CONTEMPORARY ART

Available

Reference: Wiseman 160

Printed in colors, to the sheet edges on Somerset textured paper, the full sheet, signed and numbered 24/70 in pencil, printed at Curwen Chilfont Prints with their blindstamp and with Kip Gresham's blindstamp, published by Curwen Chilford Prints and the artist