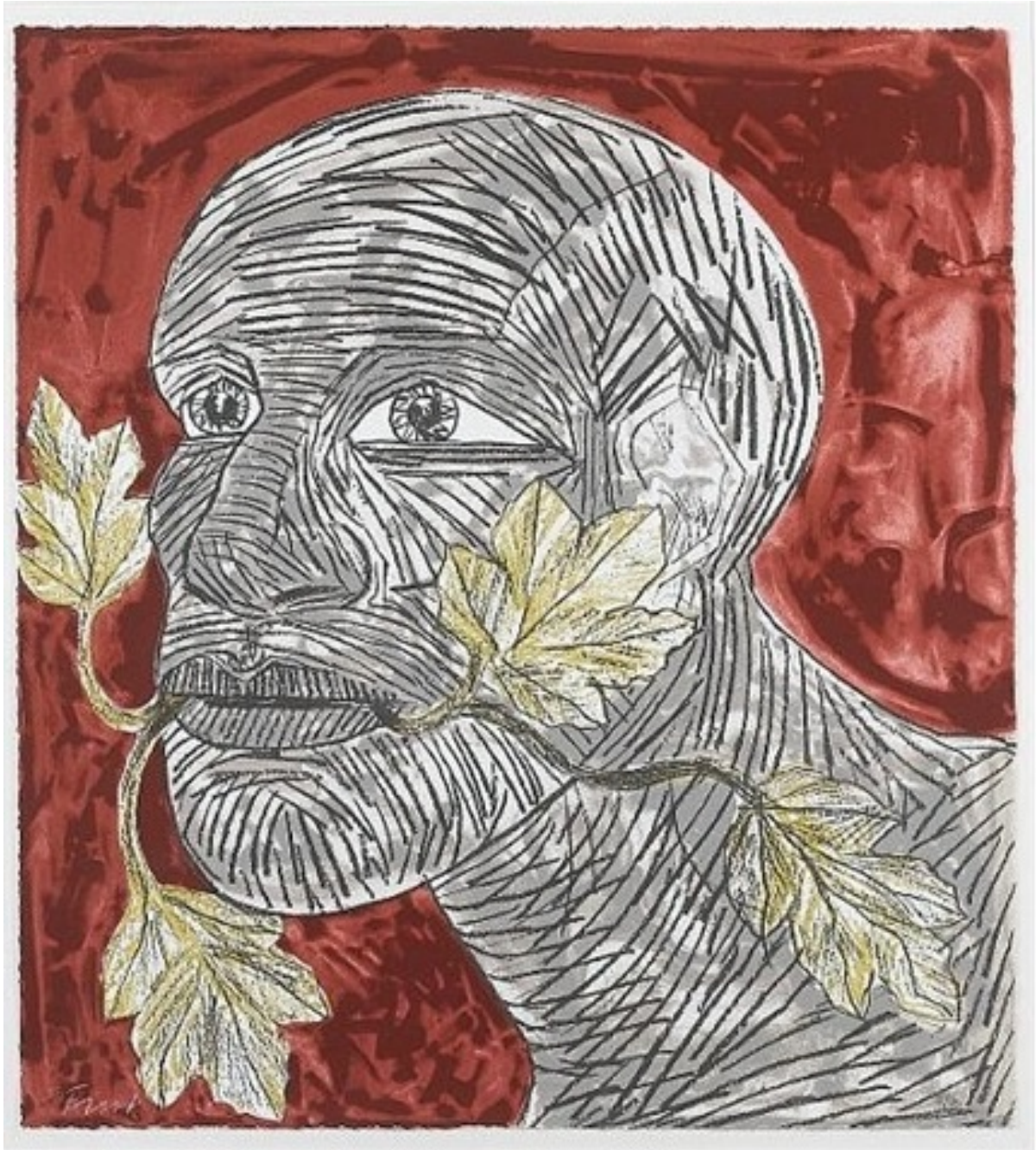


OSBORNE SAMUEL

MODERN AND CONTEMPORARY ART

ELISABETH FRINK (1930-1993)



Green Man, 1992
Screenprint
Available

OSBORNE SAMUEL

MODERN AND CONTEMPORARY ART

Reference: Wiseman 162

Printed in colors to the sheet edges, on Somerset textured paper, signed in white chalk and numbered 24/70 in pencil, printed by Curwen Chilford Prints with their blindstamp and with Kip Gresham's blindstamp, published by Curwen Chilford Prints and the artist